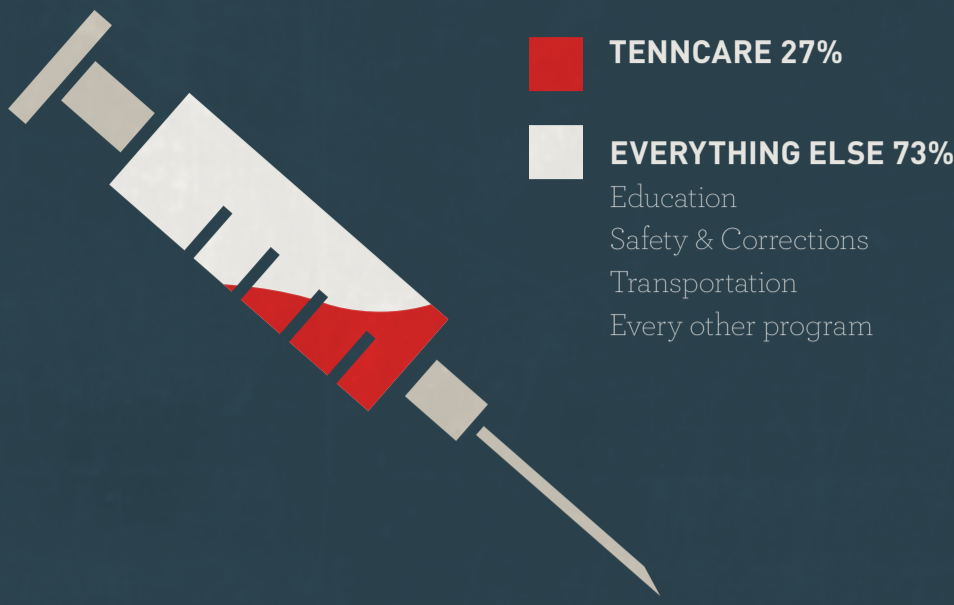


# TENNESSEE MEDICAID EXPANSION

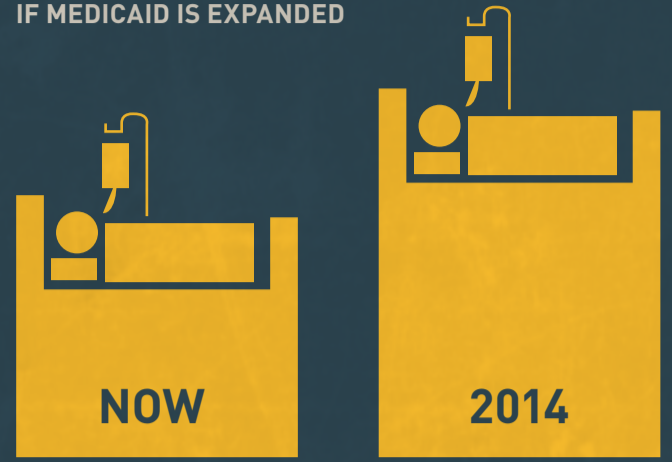
WHY A MEDICAID EXPANSION IN TENNESSEE IS UNAFFORDABLE & IMMORAL

## TENNCARE % OF STATE BUDGET



## NUMBER OF PEOPLE ON TENNCARE

**65% INCREASE**  
IF MEDICAID IS EXPANDED



**\$913 MILLION**  
OVER 5 YEARS



START

**\$1.16 BILLION**

OVER THE  
FOLLOWING  
5 YEARS

*1/3 of employers may cut current healthcare benefits...leading to even more people on TennCare.*

BEFORE THE "RACE" EVEN STARTS, TENNESSEE FACES A COST OF \$913 MILLION OVER THE NEXT 5 YEARS DUE TO THE "WOODWORK" EFFECT



2 of 3 children on Medicaid are already denied an appointment with a specialist--worse than those with no insurance at all!



40% of Primary Care Physicians in Tennessee do not accept new Medicaid patients

**ONLY 3 STATES FARE WORSE**

These are among the most expensive Medicaid programs in the nation



MEDICAID EXPANSION DOES NOT EQUAL MEDICAL CARE

## LESSONS FROM MEDICAID EXPANSION IN MASSACHUSETTS



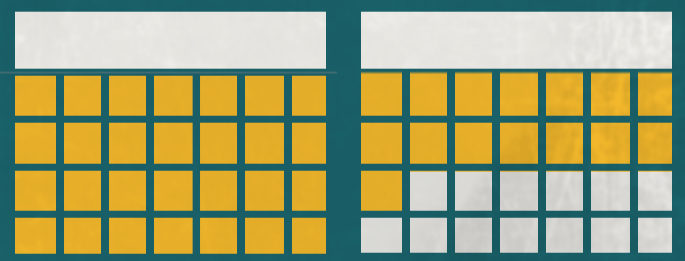
**9%**  
INCREASE IN  
ER VISITS DUE  
TO EXPANSION

AVERAGE WAIT TIME TO SEE AN  
INTERNIST



48 DAYS

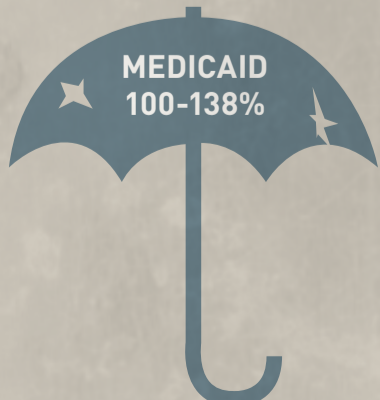
AVERAGE WAIT TIME TO SEE A  
GASTROENTEROLOGIST



43 DAYS

PRIVATE PAYER COVERAGE  
THROUGH FEDERAL EXCHANGE

**100-400%**

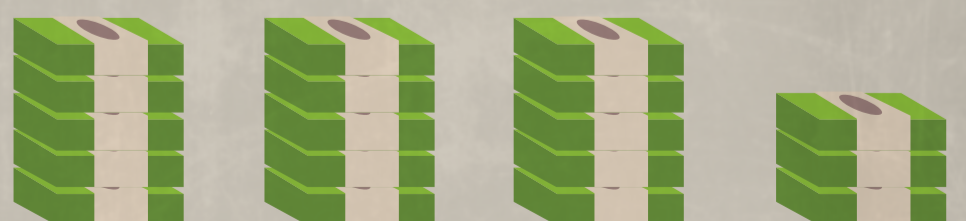


MEDICAID  
100-138%

Obamacare allows those between 100-138% Federal Poverty Level to get subsidized private insurance coverage through the Federal Exchange. A Medicaid expansion would disqualify them.

## INCREASED FAMILY PREMIUMS

= \$100



The average family already pays \$1,800 more in premiums due to cost-shifting from Medicaid, which will only rise as more Tennesseans are added to the rolls.